

TUBU



LED Tri-proof Light L9 glass

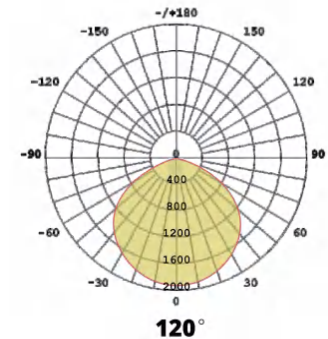
Features

- IP67 & IP69K & IK07
- material High boron silicon
- High corrosion resistance, high hardness, acid and alkali resistant
- Against water pressure of 100bar(1450psi) and temperature of 80C
- High borosilicate glass has a very low thermal expansion coefficient and high temperature resistance, and the instantaneous temperature difference is -20 C - -150 C (under the temperature mutation within 200 degrees), which is not easy to burst
- Meet the food-grade standards
- System efficiency up to 130lm/W & 150lm/W
- High CRI >80
- Environmentally friendly, no mercury, No UV, No IR
- Wide beam angle 120°
- Energy Efficiency Grade:C+
- Quick Start instant 100% luminous flux
- 5Year Warranty on complete fixture. (LED's, Driver, & Housing)
- Certificate: CE, RoHS Certified
- Surface Mount or Suspension Mount



Applications

- Car parks
- Ships
- Food Processing
- Poultry Lighting
- Farm lighting
- Water treatment plants
- Island City
- Desert City
- wetland environment
- war industry
- Power Plant
- Railway stations
- Car Washing
- Airports
- Inspection pits
- Tunnels
- Port installations
- Smelting factory
- chemical plant
- Outdoor mining
- hospital
- Aerospace Laboratory



LED Tri-proof Light L9 glass

- material High boron silicon
- High CRI >80
- Wide beam angle 120°
- Quick Start instant 100% luminous flux

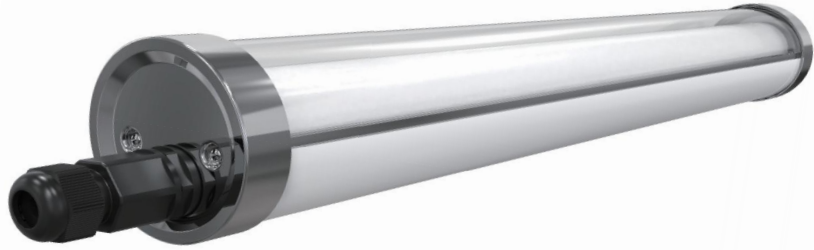
5 Year WARRANTY

IP69K

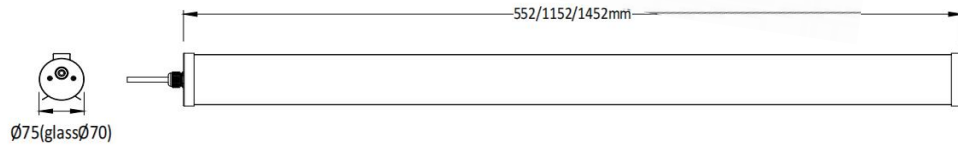
150lm/w

TUBU

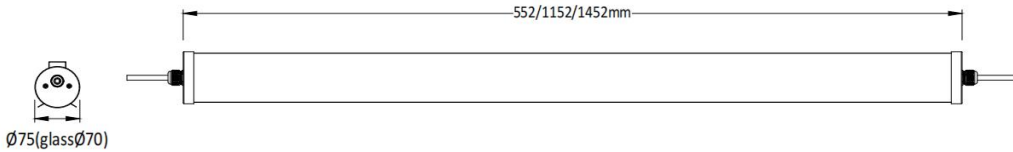
20W/40W/50W/60W



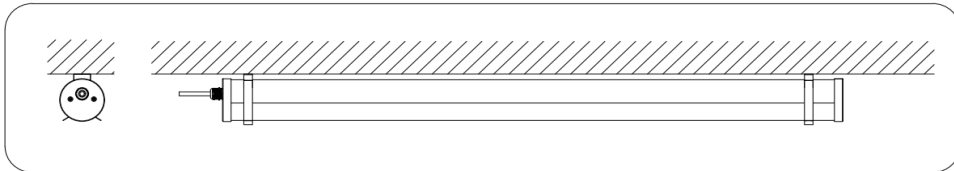
Single installation



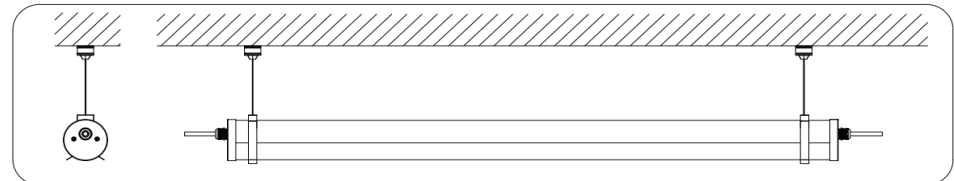
Linkable Installation



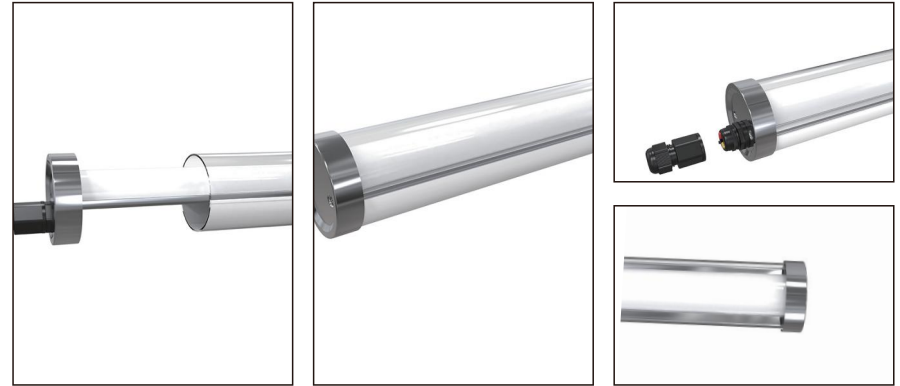
1. Surface mount



2. Suspension mount



LED Tri-proof Light L9 glass



Specifications

Product Code	TBL92F-20W	TBL94F-40W	TBL95F-50W	TBL95F-60W
Power	20W	40W	50W	60W
Input Voltage	200-240VAC/100-277VAC (50/60HZ)			
Input Current	0.09A@220VAC	0.19A@220VAC	0.23A@220VAC	0.28A@220VAC
PF	0.90@220VAC			
Dimming Option	0-10V/Dali			
CCT	3000K/4000K/5000K/6000K			
Ra > 80	Luminous Flux	3900Lm±5%	5200Lm±5%	6500Lm±5%
	Efficiency	140Lm/W±5%		
Ra > 80	Luminous Flux	3000Lm/W±5%	6000Lm/W±5%	7500Lm/W±5%
	Efficiency	150Lm/W±5%		
LED Brand	Lumileds/Hongli 2835			
Beam Angle	120°			
Operation Temp	-20 C ~ +40 C			
Storage Temp	-20 C ~ +60 C			
Life Span	Ta 40 C L70>54000Hours			
IP Class	IP67&IP69K			
IK Class	glass IK07			
Certificate	CE, RoHs, CB, IK07, IP69K			
Lamp Body Color	Glass transparent & 304/316 Stainless Steel End Caps			
Product Size (mm)	Ø75*552	Ø75*1152	Ø75*1452	Ø75*1452
Packing Size (mm)	730*345*240	1330*345*240	1630*345*240	1630*345*240
Quantity/carton	9PCS	6PCS	6PCS	6PCS
Gross weight (kg) ±0.3	16	18	28	28
Installation mode	Surface Mount/Suspension Mount			