

TUBU



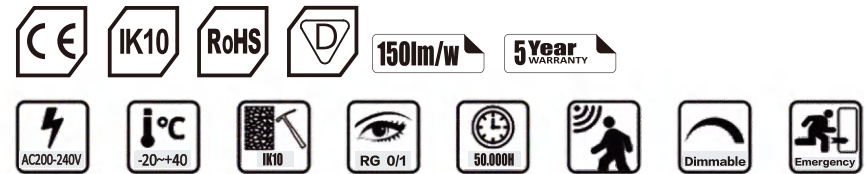
Industrial LED Linear Light L16

- 5x2.5mm² Through Wiring
- DALI Dimming
- Entire Light Engine Is Replaceable
- 30° 60° 90° Beam Angle

Industrial LED Linear Light L16

Features

- Patented design
- System efficiency 200lm/W(170lm/W,150lm/W)
- Meanwell/Philips/Sosen Driver for option, PF>0.95
- Lumileds/Epistar 3030 SMD LED , CRI > 70/80
- ADC12 aluminum die casting housing , perfect heat dissipation
- Available with 60°/ 90°/120° beam angle
- 3000K / 4000K / 5000K / 5700K / 6500K CCT
- Long life span , L70 > 50,000 Hours

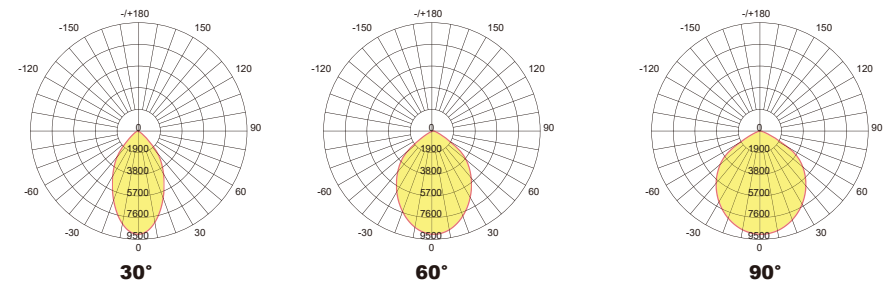


Controls and Dimming:

- DALI Control
- 1-10V Dimming

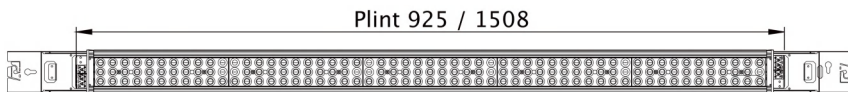
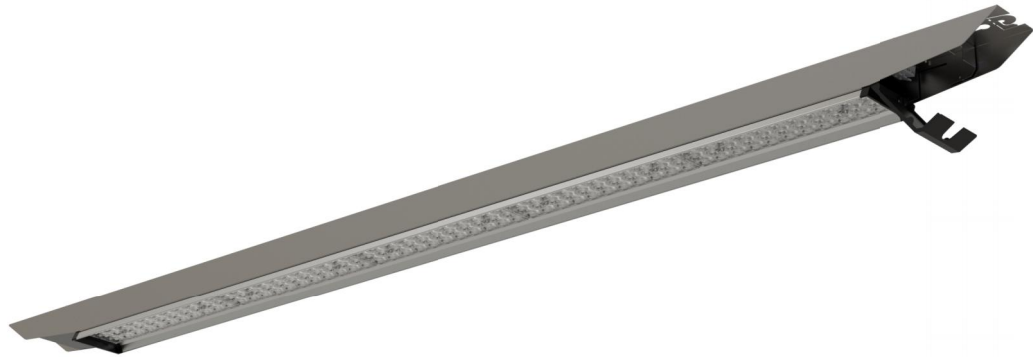
Applications

- Sports lighting
- Warehouse
- Storage
- Logistic

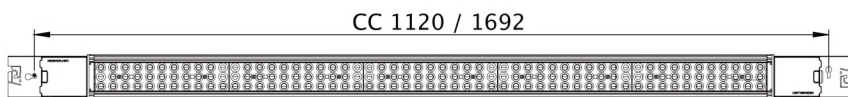


TUBU

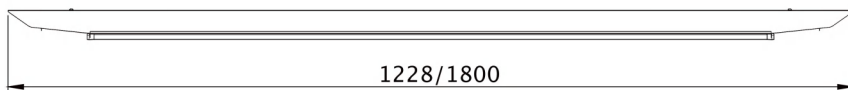
75W/90W/120W



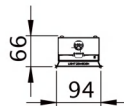
Plint 925 / 1508



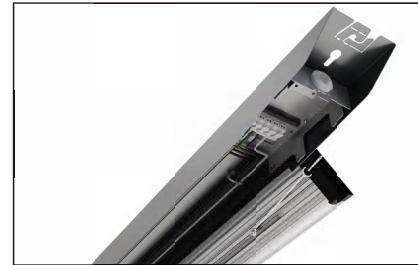
CC 1120 / 1692



1228/1800



Industrial LED Linear Light L16



Specifications

Product Code	TBL16-75W	TBL16-90W	TBL16-120W
Power	75W	90W	120W
Input Voltage	200-240VAC/100-277VAC (50/60HZ)		
Input Current	0.35A@220VAC	0.45A@220VAC	0.6A@220VAC
PF	0.90@220VAC		
Dimming Option	Dali		
CCT	3000K/4000K/5000K/6000K		
Ra > 80	Luminous Flux	11250 Lm±5%	13500 Lm±5%
	Efficiency	150Lm/W±5%	
LED Brand	2835 / 3030		
Beam Angle	30° 60° 90°		
Operation Temp	-20 C ~+40 C		
Storage Temp	-20 C ~+60 C		
Life Span	Ta 40 C L70>54000Hours		
IP Class	IP23		
IK Class	IK08		
Certificate	CE, RoHs		
Lamp Body Color	Painted (Ral 9006) Galvanised steel; LED Body: Extruded Aluminium		
Product Size (mm)	1230*94*66	1800*94*66	1800*94*66
Packing Size (mm)	1270*241*260	1840*241*185	1840*241*185
Quantity/carton	6PCS	4PCS	4PCS
Gross weight (kg) ±0.3	19.88	19.84	19.84
Installation mode	Surface Mount/Suspension Mount		