

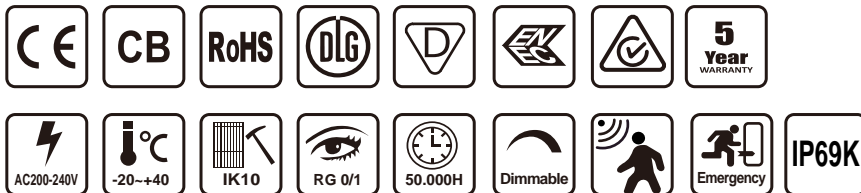
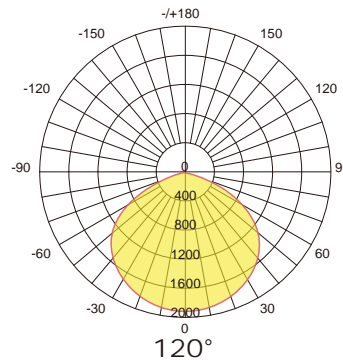
Features

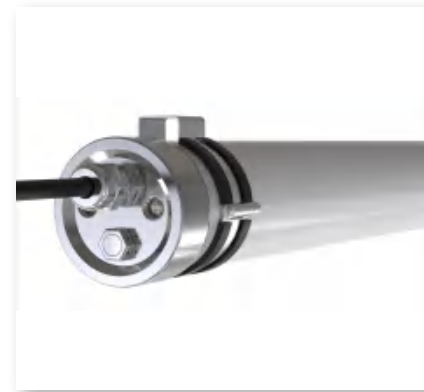
- IP67 & IP69K & IK10
- PMMA IK08 / PC IK10
- Anti-ammonia
- Against water pressure of 100bar (1450psi) and temperature of 80°C
- System efficiency up to 150Lm/W & 170Lm/W
- High CRI>80
- Environmentally friendly, no mercury, no UV, no IR
- Wide beam angle 120°
- 5 years warranty
- Quick start instant 100% luminous flux
- Certificate: CE, RoHS, CB, IK10, IP69K, ENEC, RCM, SAA, DLG, ETL certified
- Surface mount or suspension mount



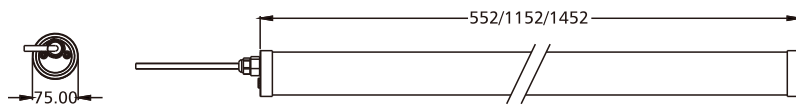
Applications

- Factory workshops
- Warehouses
- Logistics centers
- Parks
- Squares
- Scenic spots
- Ships
- Outdoor parking lots
- Bus stops
- Food processing
- Pharmaceutical industry
- Agriculture
- Animal husbandry
- Marine engineering

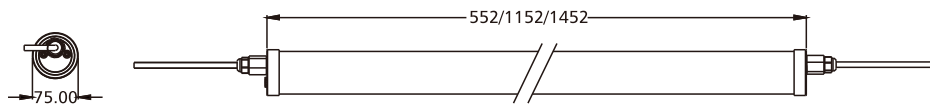




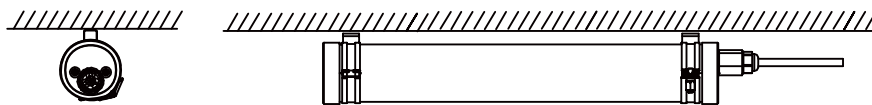
Single Installation



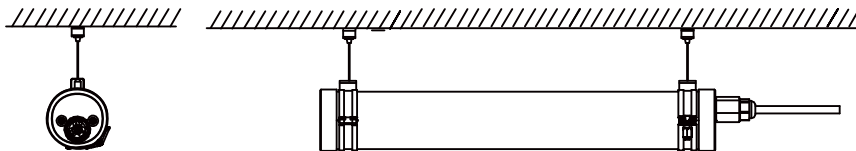
Linkable Installation



Surface Mount



Suspension Mount



Specifications

Product Code	TBL92F-20W	TBL94F-40W	TBL95F-50W	TBL95F-60W
Power	20W	40W	50W	60W
Input Voltage	200-240VAC / 100-277VAC (50/60Hz)			
Input Current	0.09A@220VAC	0.19A@220VAC	0.23A@220VAC	0.28A@220VAC
PF	0.90@220VAC			
Function Optional	1-10V / DALI / MW Sensor / Emergency			
CCT	2700K / 3000K / 4000K / 5000K / 5700K / 6000K / 6500K			
Luminous Flux	3000Lm	6000Lm	7500Lm	9000Lm
Efficiency	150Lm/W±5% (Ra>80)			
Luminous Flux	3400Lm	6800Lm	8500Lm	10200Lm
Efficiency	170Lm/W±5% (Ra>80)			
LED Brand	Lumileds / Hongli 2835			
Beam Angle	120°			
Driver Brand	BOKE			
Operation Temp	-20°C ~ +40°C			
Storage Temp	-20°C ~ +60°C			
Life Span	Ta 40°C L70>54000 hours			
IP Class	IP67 & IP69K			
IK Class	PMMA IK08 / PC IK10			
Certificate	CE, RoHS, CB, IK10, IP69K, ENEC, RCM, SAA, DLG, ETL			
Lamp Body Color	Milky PC / PMMA housing & 304 / 316 stainless steel end caps			
Product Size (mm)	∅75*552	∅75*1152	∅75*1452	∅75*1452
Packing Size (mm)	730*260*260	1330*260*180	1630*260*180	1630*260*180
Quantity / Carton	9PCS	6PCS	6PCS	6PCS
Gross Weight (kg) ±0.3	11.1	10.7	13.1	13.1
Installation Mode	Surface mount / Suspension mount			